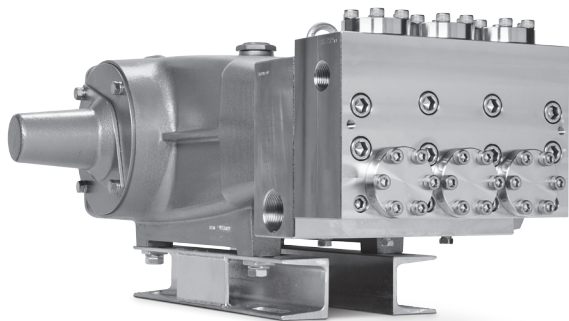


DATA SHEET

68 FRAME BLOCK-STYLE PLUNGER PUMPS



Stainless Steel
Model: 6832



Model 6832 Shown
(Shaft protector and mounting rails included)

SPECIFICATIONS	U.S. Measure	Metric Measure
Flow	40 gpm	151 lpm
Pressure Range	100 to 2300 psi	6.9 to 159 bar
Pump RPM*	625 rpm	625 rpm
Inlet Pressure Range	Flooded to 50 psi	Flooded to 3.5 bar
Max. Liquid Temperature	140° F	60° C
Above 130°F call Cat Pumps for inlet conditions and elastomer recommendations.		
Bore	1.575"	40 mm
Stroke	2.579"	65.5 mm
Crankcase Capacity	10 Qts.	9.46 l
Inlet Ports (2)	1-1/2" NPT(F)	1-1/2" NPT(F)
Discharge Ports (2)	1" NPT(F)	1" NPT(F)
Shaft Diameter	1.772"	45 mm
Weight	355 lbs.	161 kg
Dimensions	29.72 x 24.02 x 12.00"	755 x 610 x 305 mm

*Pump minimum is 100 RPM.

FEATURES

- Triplex plunger design delivers high efficiency and low pulsation.
- Durable dual V-Packings are lubricated and cooled by pumped liquid.
- Pre-Set Lo-Pressure seals provide secondary protection against external leaks and require no packing adjustment.
- Special high-density, polished, concentric ceramic plungers provide a true wear surface and extended seal life.
- Standard NBR seals with alternative options for temperature and chemical compatibility
 - FPM – .0110

ELECTRIC HORSEPOWER REQUIREMENTS

FLOW		PRESSURE				RPM
		psi 1000	psi 1500	psi 2000	psi 2300	
gpm	lpm	bar 69	bar 103	bar 138	bar 159	
40	151	27.4	41.1	54.8	63.0	625
30	114	20.6	30.9	41.1	47.3	470
25	95	17.2	25.7	34.3	39.4	391
20	76	13.7	20.5	27.5	31.5	331

$$\text{DETERMINING THE PUMP R.P.M.} \quad \frac{\text{Rated gpm}}{\text{Rated rpm}} = \frac{\text{"Desired" gpm}}{\text{"Desired" rpm}}$$

$$\text{DETERMINING THE REQUIRED H.P.} \quad \frac{\text{Hp (Electric Brake)}}{1460} = \frac{\text{gpm x psi}}{1460}$$

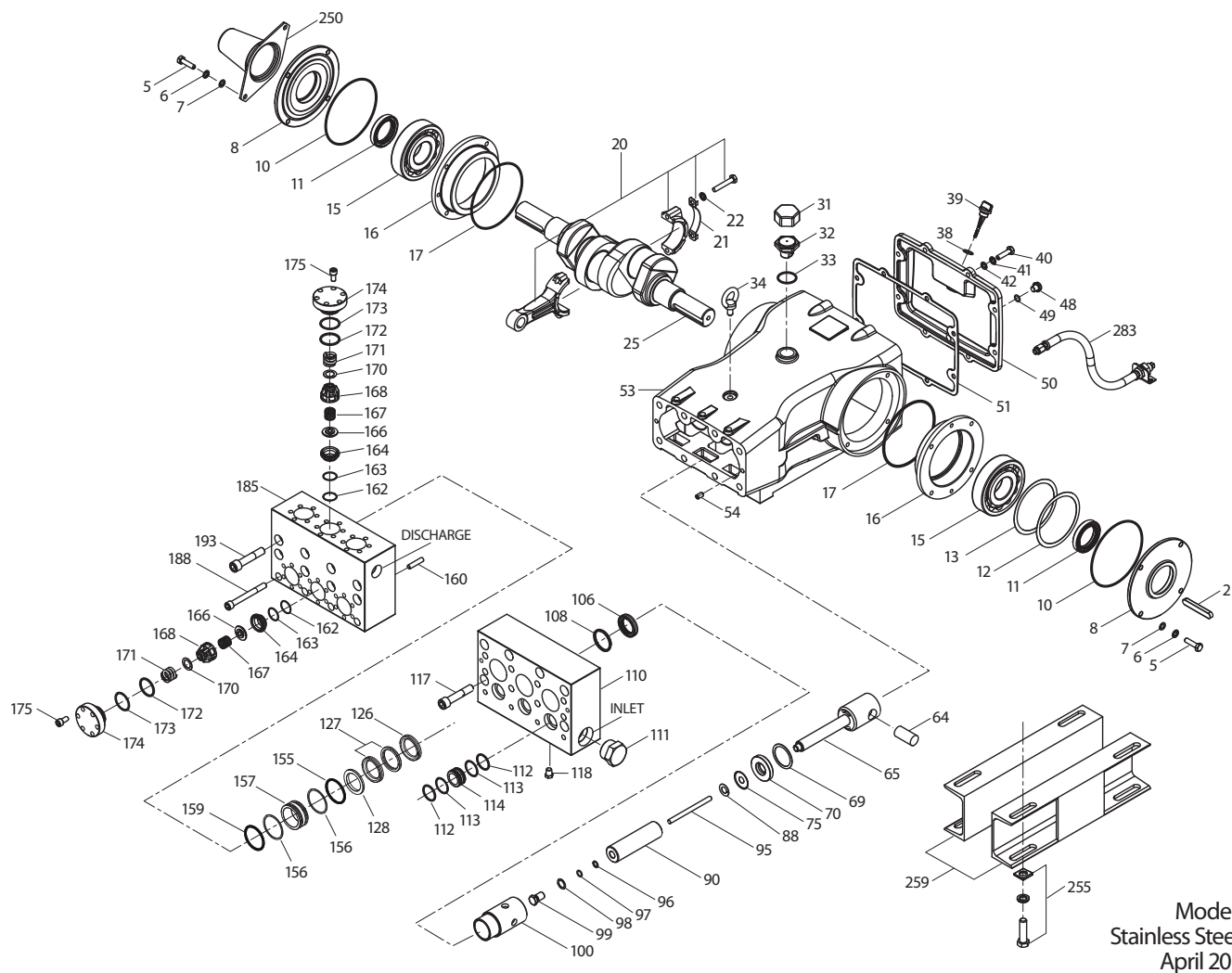
$$\text{DETERMINING MOTOR PULLEY SIZE} \quad \frac{\text{Motor Pulley O.D.}}{\text{Pump rpm}} = \frac{\text{Pump Pulley O.D.}}{\text{Motor rpm}}$$

See complete Drive Packages [Includes: pulleys, belts, hubs, key] Tech Bulletin 003.
Refer to pump **Service Manual** for repair procedure and additional technical information.

PARTS LIST

ITEM	PART NUMBER	MATL	DESCRIPTION	QTY
2	43048	STL	Key (M14x9x90)	1
5	89728	S	Screw, HH (M10x40)	8
6	15847	S	Lockwasher (M10)	8
7	19934	S	Washer, Flat (M10)	8
8	29443	AL	Cover, Bearing, Outer [See Tech Bulletin 118]	2
10	29444	NBR	O-Ring, Bearing Cover - 70D	2
11	11443	NBR	Seal, Oil, Crankshaft - 70D	2
12	126594	STCP R	Washer, Shim (M120x0.3)	0-2
13	126595	STCP R	Washer, Shim (M120x0.5)	0-2
15	29441	STL	Bearing, Roller	2
16	29442	STL	Cover Bearing, Inner	2
17	29444	NBR	O-Ring, Bearing Cover - 70D	2
20	126612	BBHS	Assembly, Connecting Rod (Incls: 21, 22)	3
21	126560	STCP R	Washer, Locking	3
22	126593	STCP R	Washer, Shim (M10.5x1.5)	6
25	29440	FCM	Crankshaft, Dual Shaft	1
31	828710	PE	Protector, Oil Cap w/Foam Gasket	1
32	43211	ABS	Cap, Oil Filler	1
33	14177	NBR	O-Ring, Filler Cap - 70D	1
34	126743	STCP R	Bolt, Eye (M12) (For Lifting Pump Only)	1
38	129343	RBR	Gasket, Flat Flex	1
39	27769	ABS	Stick, Dip	1
40	89627	S	Screw, HH (M10x30)	8
41	15847	S	Lockwasher (M10)	8
42	19934	S	Washer, Flat (M10)	8
48	25625	STCP	Plug, Drain (1/4"x19BSP)	1
49	23170	NBR	O-Ring, Drain Plug - 70D	1
50	29438	AL	Cover, Rear (See Tech Bulletin 118)	1
51	129386	NBR	Gasket, Rear Cover	1
53	45303	AL	Crankcase (Incls: 34, 54) [See Tech Bulletin 118]	1
54	43282	S	Pin, Guide	2
64	29481	CM	Pin, Crosshead	3
65	48735	SSZZ	Rod, Plunger	3
69	126588	STCP R	Washer, Oil Seal	3
70	29454	NBR	Seal, Oil, Crankcase - 80D	3
75	43865	S	Slinger, Barrier	3
88	45676	S	Washer, Keyhole (M16)	3
90	43921	CC	Plunger (M40x145)	3
95	89778	SS	Stud, Plunger Retainer (M10x135)	3
96	20189	PTFE	Back-up-Ring, Plunger Retainer	3
97	11345	NBR	O-Ring, Plunger Retainer - 70D	3
	11375	FPM	O-Ring, Plunger Retainer - 70D	3
98	701958	SSD	Gasket, Plunger Retainer	3
99	701957	SSD	Retainer, Plunger (M10)	3
100	703084	D	Retainer, Seal	3
106	44113	NBR	Seal, LPS, w/SS-Spg	3
	44740	FPM	Seal, LPS, w/SS-Spg	3
108	701948	SSD	Spacer, LPS	3
110	704185	SSD	Manifold Inlet, Block-Style	1
111	701983	SSD	Plug, Inlet Manifold [1-1/2" NPT(M)]	1
112	701632	NBR	O-Ring, Spacer	6
	701328	FPM	O-Ring, Spacer	6
113	701329	PTFE	Back-up-Ring, Spacer	6
114	704356	SSD	Spacer, Inlet	3
117	89694	S	Screw, HSH (M16x110)	6
118	701676	SSD	Plug [1/4" NPT(M)]	3
126	48391	D	Adapter, Female	3
127	44609	STG	V-Packing	6
	44741	SFG	V-Packing	6
128	701950	SSD	Adapter, Male	3
155	48860	NBR	O-Ring, V-Packing Spacer, Inner - 90D	3
	20137	FPM	O-Ring, V-Packing Spacer, Inner - 70D	3
156	48362	D	Back-up-Ring, V-Packing Spacer	6
157	701952	SSD	Spacer, V-Packing	3
159	48860	NBR	O-Ring, V-Packing Spacer, Outer - 90D	3
	20137	FPM	O-Ring, V-Packing Spacer, Outer - 70D	3
160	44756	S	Pin, Guide	2
162	48363	D	Back-up-Ring, Seat	6
163	26142	NBR	O-Ring, Seat - 80D	6
	14330	FPM	O-Ring, Seat - 70D	6
164	701956	SSD	Seat	6
166	701955	SSD	Valve	6

EXPLODED VIEW



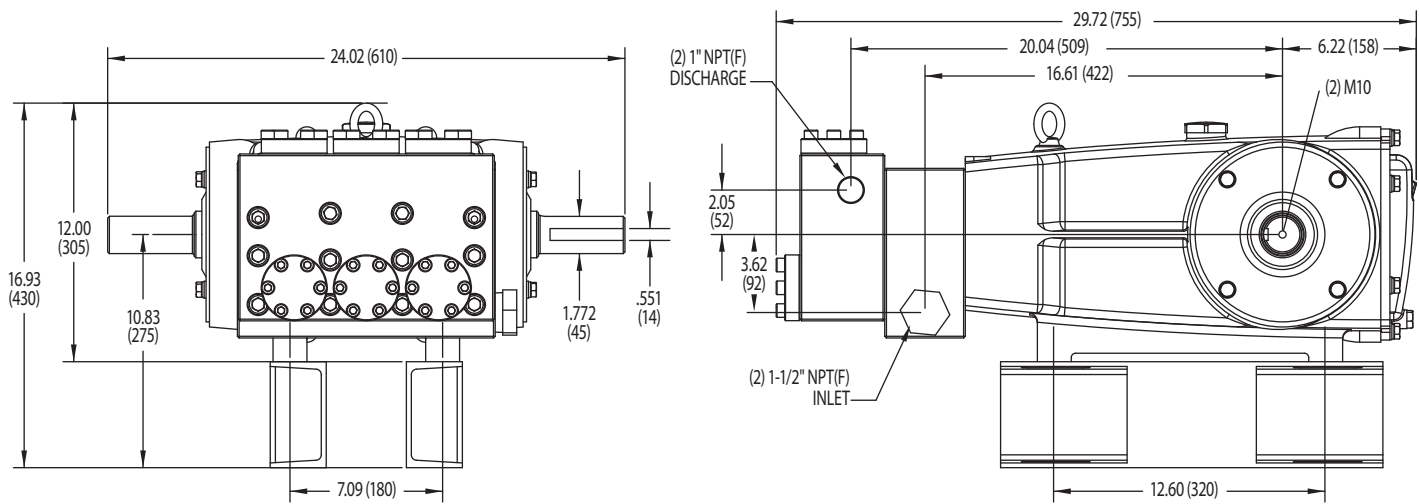
Model
Stainless Steel - 6832
April 197

ITEM	PART NUMBER	MATL	DESCRIPTION	QTY
167	701962	NIH	Spring	6
168	44728	PVDF	Retainer, Spring	6
170	701959	SSD	Washer, Retainer	6
171	701961	HC	Spring, Coil	6
172	89827	NBR	O-Ring, Valve Plug - 90D	6
	11747	FPM	O-Ring, Valve Plug - 90D	6
173	48364	D	Back-up-Ring, Valve Plug	6
174	704187	SSD	Plug, Valve	6
175	87951	S	Screw, HSH (M10x30)	36
185	704186	SSD	Manifold, Discharge, Block-Style	1
188	701279	S	Screw, HSH (M12x100), Lower	4
193	89694	S	Screw, HSH (M16x110), Upper	8
250	29445	AL	Protector, Shaft (See Tech Bulletin 118)	1
255	33243	STZP	Kit, Mount (Included w/Pump)	2
259	126604	STCPR	Rail, Box (Included w/Pump)	2
275	990014	STL	Hub, "B", M45, Keyway [See Tech Bulletin 003]	1
283	34314	—	Kit, Oil Drain (3/8" x 48") [See Individual Data Sheet]	1
290	6124	—	Gasket, Liquid (3 oz.)	1
299	901390	SSD	Head, Complete w/NBR Seals and O-Rings	1
300	701647	NBR*	Kit, Seal (Incls: 97,106,112,113,127,155,156,159)	1
—	33708	FPM	Kit, Seal (Incls: 97,106,112,113,127,155,156,159)	1
310	702770	NBR	Kit, Valve (Incls: 162,163,164,166,167,168,170,172,173)	2
—	77043	FPM	Kit, Valve (Incls: 162,163,164,166,167,168,170,172,173)	2
—	819010	F	Assy, Crankcase, Cast Iron Conversion	1
—	6105	—	Oil, Twin Pack (Two 2.5 gal.) ISO-68 Hydraulic (Fill to specified crankcase capacity prior to start-up)	1
—	6119	—	Lubricant, Antiseize (2 oz.) [See Tech Bulletin 095]	1

Italics are optional items. R Components comply with RoHS Directive.

*Review individual parts in each kit for material code identification. See Tech Bulletin 002, 003, 024, 036, 074, 083, 084, 095, 105 and 118 for additional information.

MATERIAL CODES (Not Part of Part Number): ABS=ABS Plastic AL=Aluminum BBHS=Brass/High Strength CC=Ceramic CM=Chrome-Moly D=Acetal F=Cast Iron FCM=Forged Chrome-moly FPM=Fluorocarbon NBR=Medium Nitrile (Buna-N) HC=Ni-Cr-Mo w/ Alloy NIH=High Nickel Alloy PE=Polyethylene PTFE=Pure Polytetrafluoroethylene PVDF=Polyvinylidene Fluoride RBR=Rubber S=304SS SFG=Special Blend FPM SS=316SS SSD=Duplex Stainless SSZZ=316SS/Zamak STG=Special Blend PTFE White STL=Steel STCP=Steel/Chrome Plated STZP=Steel/Zinc Plated



Model 6832


⚠ CAUTIONS AND WARNINGS

All High Pressure Systems require a primary pressure regulating device (i.e. regulator, unloader) and a secondary pressure relief device (i.e. pop-off valve, relief valve). Failure to install such relief devices could result in personal injury or damage to pump or property. Cat Pumps does not assume any liability or responsibility for the operation of a customer's high pressure system.

Read all CAUTIONS and WARNINGS before commencing service or operation of any high pressure system. The CAUTIONS and WARNINGS are included in each service manual and with each Accessory Data sheet. CAUTIONS and WARNINGS can also be viewed online at www.catpumps.com/cautions-warnings or can be requested directly from Cat Pumps.

WARRANTY

View the Limited Warranty on-line at www.catpumps.com/warranty.

	<p>CAT PUMPS 1681 - 94TH LANE N.E. MINNEAPOLIS, MN 55449-4324 PHONE (763) 780-5440 — FAX (763) 780-2958 e-mail: techsupport@catpumps.com www.catpumps.com</p>
---	--